



AUDITORIUM MELOTTI TECHNICAL RIDER



Info: festival@orienteoccidente.it
www.orienteoccidente.it



We will have the pleasure to welcome your company in Rovereto during our festival.
To prepare your performances we send you the technical rider of the Auditorium Melotti.

Please inform us as soon as possible about difficulties we could meet.

Looking forward to welcoming you soon,

Best regards.

Festival Staff

Technical director: Denis Frisanco, tecnica@orienteoccidente.it

INDEX

1. Stage access and stage elevator	p. 3
2. Stage	p. 4
3. Grid & pipes	p. 5
4. Electrical supply	p. 6
5. Dressing rooms	p. 7
6. Sewing rooms	p. 7
7. Rehearsal room	p. 7
8. House capacity	p. 11
9. Technical equipment	p. 12

ATTACHMENT

Cross section and general theatre plan

1. Stage access and Stage Elevator

Access to the Auditorium back door, please notice width only 2,87 mt (only for van no lorry or truck or truck tarpaulin) as in the photos.

Vans and other vehicles (cars etc.) can stop only for the time of unloading and loading of the goods. Then they have to be removed and parked elsewhere. Trucks and lorries have to be parked in the industrial area of the town.



**Up to 2.600
kg Size
(internal)
Width: 3.5
mt Depth: 2
mt Height:
2.5 mt**

2. Stage

Width: 14,8 mt

Depth: 10 mt

Depth Curtain: 8,4 mt

Proscenium: 2,35 mt

Proscenium Height: 7,15 mt

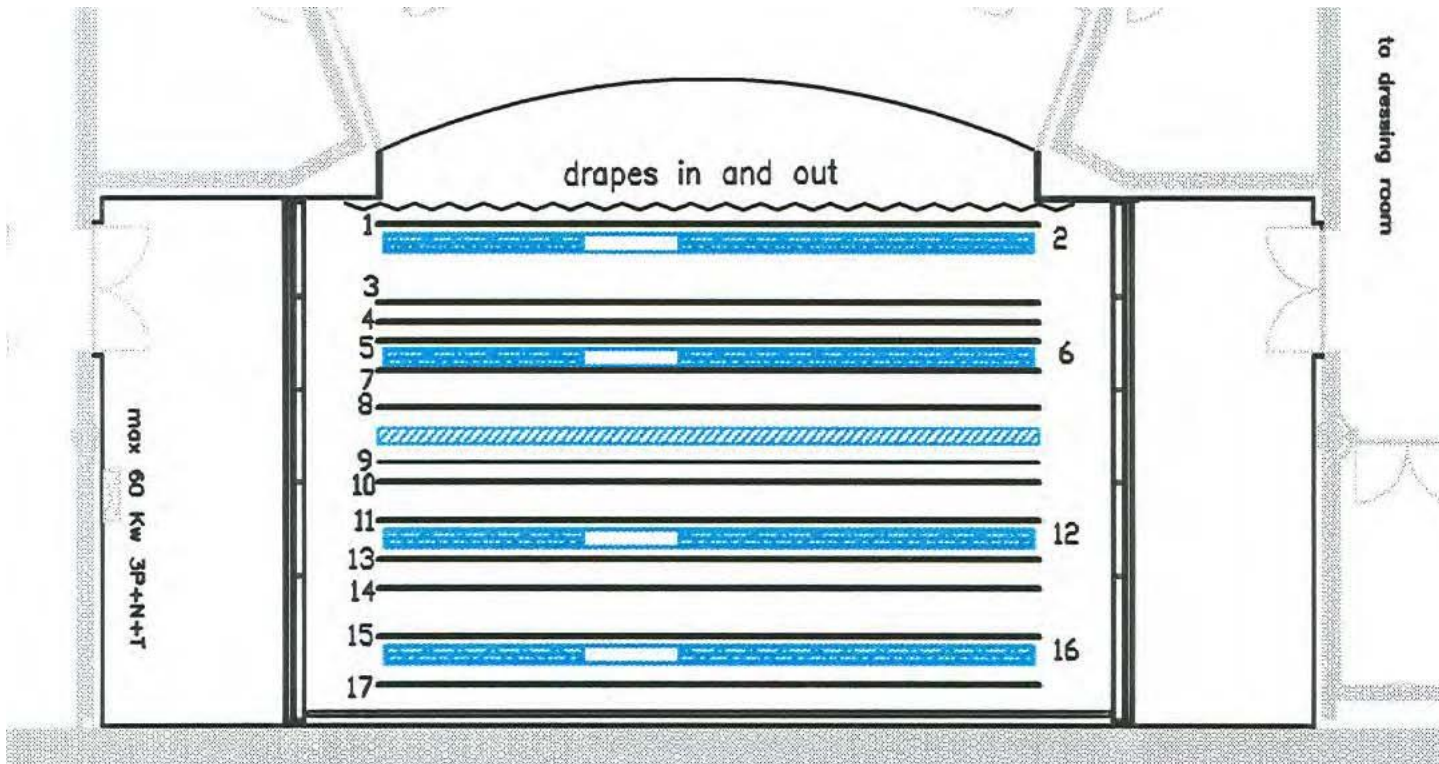
Proscenium Opening: 12 mt

Stage rank: 0%

Grid Height: 8,4 mt



3. Grid & Pipes



Pipe Number	Type	Distance from the main curtain (cm)	Notes
1	Electric winch pipe	23	Electric winch pipe: Aluminium pipes with electric winch length 12m maximum load 15 kg/m
2	Electric pipe with power outlets	55	
3	Pipe with ropes	130	Electric pipe with power outlets: Electrical pipe with 16 outlets of 2.5 Kw 220V and 1 outlet 5 Kw 220V length 12 mt. maximum load 25 kg/m
4	Electric winch pipe	163	
5	Pipe with ropes	195	
6	Electric pipe with power outlets	205	
7	Pipe with ropes	255	
8	Electric winch pipe	318	
	PROJECTION SCREEN	355	
9	Electric winch pipe	392	
10	Pipe with ropes	420	Electric pipe (Backdrop): Electrical pipe without power outlets length 12m Maximum load 25 kg/m
11	Pipe with ropes	500	
12	Electric pipe with power outlets	530	
13	Electric winch pipe	560	
14	Pipe with ropes	590	
15	Pipe with ropes	670	
16	Electric pipe with power outlets	685	
17	Electric pipe (Backdrop)	715	

4. Electrical Supply

The theater is supplied with a 380 Volts three phases 100 kw max.

Available circuits and their positions.

General location	Position	N° x 2,5 kw	N° x 5 kw	Notes:
Stage top	Pipe n 2	16	1	Outlets for 2,5 kw: CEE16A 2P+Earth max 230 V Outlets for 5 kw: CEE32A 2P+Earth max 230 V 8 boom for side lightning 5 light sources each floor->3m high
	Pipe n 6	16	1	
	Pipe n 12	16	1	
	Pipe n 16	16	1	
Stage floor	Right	10 + 2		
	Left	10 + 2		
Balcony	Right	12		
	Left	12		

5. Dressing rooms

Total number 6:

- 3 small dressing rooms for 2 people
- 1 dressing room for 5 people
- 2 big dressing rooms for 10 people each

All dressing rooms bare equipped with showers and toilets

6. Sewing room

Iron and iron boards

7. Rehersal room

Two rooms available next to the dressing rooms



8. House capacity

407 seats

Technical Equipment

LIGHTS		
PC 1.000 W	30	
PC 2.000 W	10	
PROFILE SPOTS	10	ETC 25/50°
PROFILE SPOTS	10	ETC 15/30°
PROFILE SPOTS	20	ETC 36°
PROFILE SPOTS	5	SELECON PACIFIC 15/30°
PROFILE SPOTS	10	SELECON 25/50°
PAR 64	48	lamps 12xcp 60 - 12x cp 61 - 24x cp62
DOMINO	4 + 4	4 Spotlight Cyc + 4 CYC Bar Spotlight with 4 cyc's each
STANDS	8	
LIGHTING TABLE	1	ETC ELEMENT 500 ch
DIMMERS 2 KW	96 ch	
DIMMERS 5 KW	6 ch	
SOUND		
P.A. 4 JBL AC 2215-95 WITH FINAL AMPS CROWN		
SUB WOOFER	2	DURAN AUDIO UB-24
MONITORS	4	X8 L-ACOUSTIC with finals
CASSE	2	D&B C6 FINAL P1200
MIXER	1	YAMAHA QL1 with analogic input/output 32/16
MICROPHONES	4	Radio Shure QLXD4 with 4 SM58 or 4 Belpack + 4 headset WBH 53 flesh-tone
MICROPHONES	4	Shure SM58 with cable
MICROPHONES	4	Desktop Mic.
D.I.	4	PASSIVE PALMER
CD PLAYER	2	Tascam CD500

VIDEO		
--------------	--	--

VIDEO BEAMER	1	NEC GDC-SX-3000 10.000 a.l., Hdmi in signal
--------------	---	---

